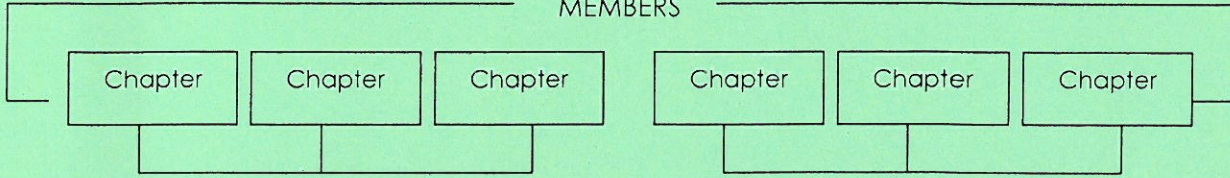
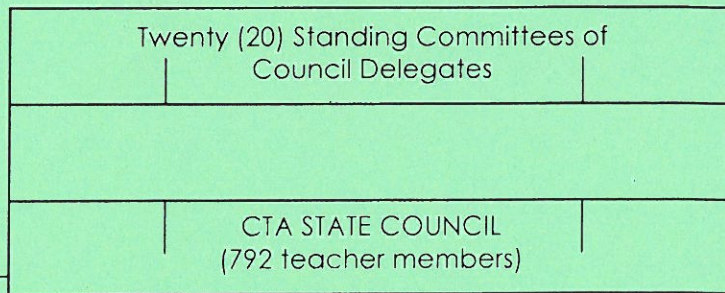
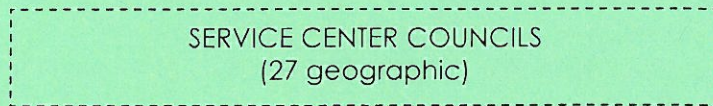


CTA Governance Structure

MEMBERS

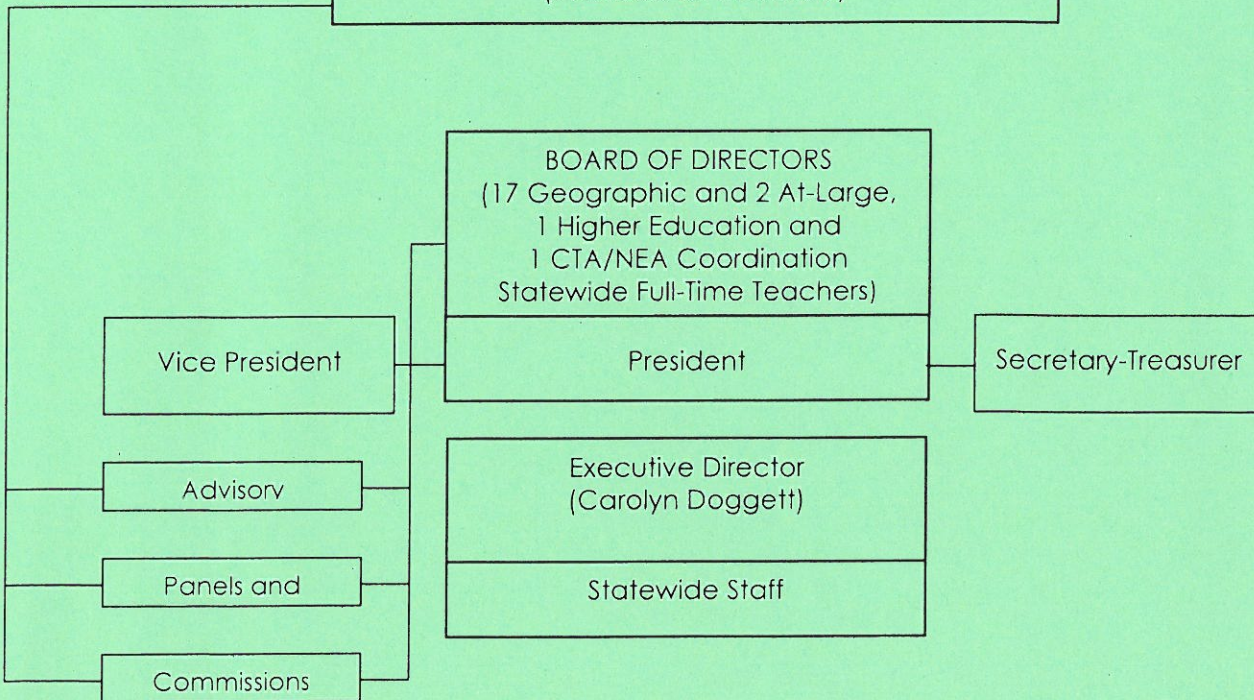


Small Chapters share State Council Delegates: Large Chapters have more than one.
(1 per 438 Members)



Coordination

Policy Making



Implementation

Execution



CTA/NEA Delivery of Staff Services

Primary Contact Staff	Field Based Staff By Region	Headquarters Based Department Staff
<p>Regional UniServ Staff</p> <p>(a.k.a., Primary Contact Staff, Chapter Services Consultants or Executive Directors)</p>	<p>Regional Management</p> <p>Regional Organizers/ Charter School Organizers</p> <p>Communications</p> <p>Community College Association</p> <p>Community Outreach Consultants</p> <p>CTA ESP</p> <p>Human Rights Consultants</p> <p>Instruction and Professional Development Consultants</p> <p>Negotiations and Organizational Development Specialists</p> <p>Political Organizing Specialists</p>	<p>Accounting/Membership</p> <p>Central Services</p> <p>Communications</p> <p>Governance</p> <p>Governmental Relations (Sacramento)</p> <p>Human Resources</p> <p>Human Rights</p> <p>Integrated Systems and Strategies</p> <p>Instruction and Professional Development</p> <p>Legal Services</p> <p>Negotiations and Organizational Development</p> <p>Risk Management and Member Benefits</p> <p>Training Information and Development</p>



NEA STRUCTURE

NATIONAL EDUCATION ASSOCIATION OF THE UNITED STATES
Chartered by Congress - 1906

REVIEW BOARD
9 Members

REPRESENTATIVE ASSEMBLY
9,000 delegates

BOARD OF DIRECTORS
172 voting and nonvoting members

EXECUTIVE COMMITTEE
9 members
including
3 Executive Officers

President
Vice President
Secretary-Treasurer

EXECUTIVE DIRECTOR

STANDING COMMITTEES OF THE REPRESENTATIVE ASSEMBLY

Constitution, Bylaws, and Rules
Program and Budget
Resolutions
Credentials
Elections

STRATEGIC PRIORITY STANDING COMMITTEES

Employee Advocacy
Human/Civil Rights
Legislation
Membership Services/Affiliate Relationships
Professional Standards and Practice

ADVISORY STANDING COMMITTEES

Women's Issues
Ethnic Minority Affairs
Membership
Student Members
NEA-Retired Advisory Council*
Committee on Sexual Orientation/Gender Identification

*The NEA-Retired Advisory Council is an elective rather than appointive body.

Note: This chart does not include ad hoc internal committees of the Board of Directors and Executive Committees.

1. Major policies of the National Education Association are determined annually at the early-summer meeting of the Representative Assembly.
2. Within the guidelines voted upon by the Representative Assembly, the 172-member NEA Board of Directors determines the program of the Association. The Board of Directors meets five times each year. Members of the Board from California are elected by the State Council. Representation for each state is determined by the number of members within the state.
3. The nine members of the NEA Executive Committee are elected by the Representative Assembly. The Executive Committee holds seven regular meetings each year to carry out the business of the Association—and may hold special meetings as needed.

